

Col1a1-IRES-CreERT2

Nomenclature	C57BL/6Smoc- <i>Col1a1</i> ^{em(IRES-CreERT2)1Smoc}
Cat. NO.	NM-KI-225031
Strain State	Repository Live

Gene Summary

Gene Symbol Col1a1	Synonyms	Cola1; Mov13; Cola-1; Mov-13; Col1a-1
	NCBI ID	12842
	MGI ID	88467
	Ensembl ID	ENSMUSG000000001506
	Human Ortholog	COL1A1

Model Description

IRES-CreERT2 expression cassette was knocked into the Col1a1 gene .

Research Application: Cre mouse, osteoblast

*Literature published using this strain should indicate: Col1a1-IRES-CreERT2 mice (Cat. NO. NM-KI-225031) were purchased from Shanghai Model Organisms Center, Inc..

Validation Data

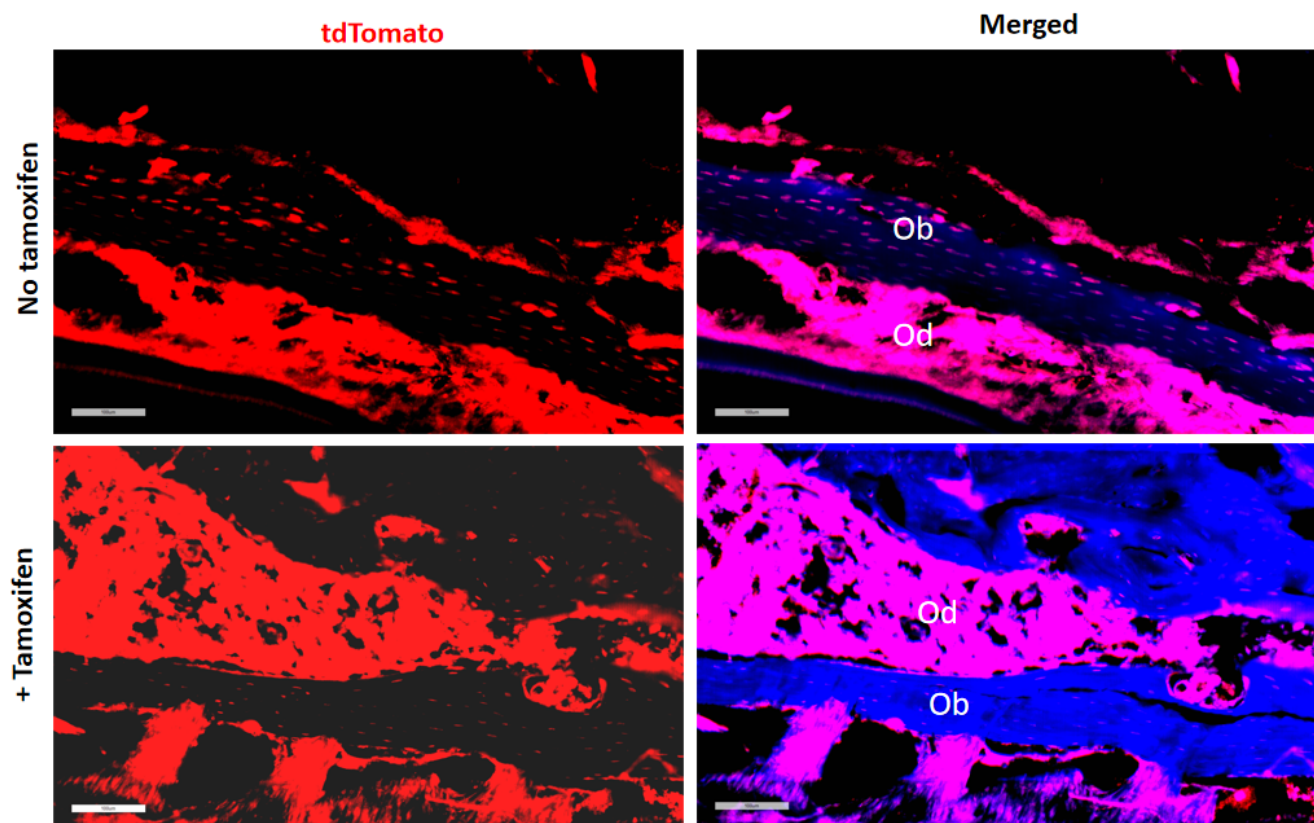


Fig1. Cre mediated recombination in thyroid of Col1a1^{CreERT2/+};Rosa26^{tdTomato/+} mouse.

Ob, osteoblasts; Od, odontoblasts

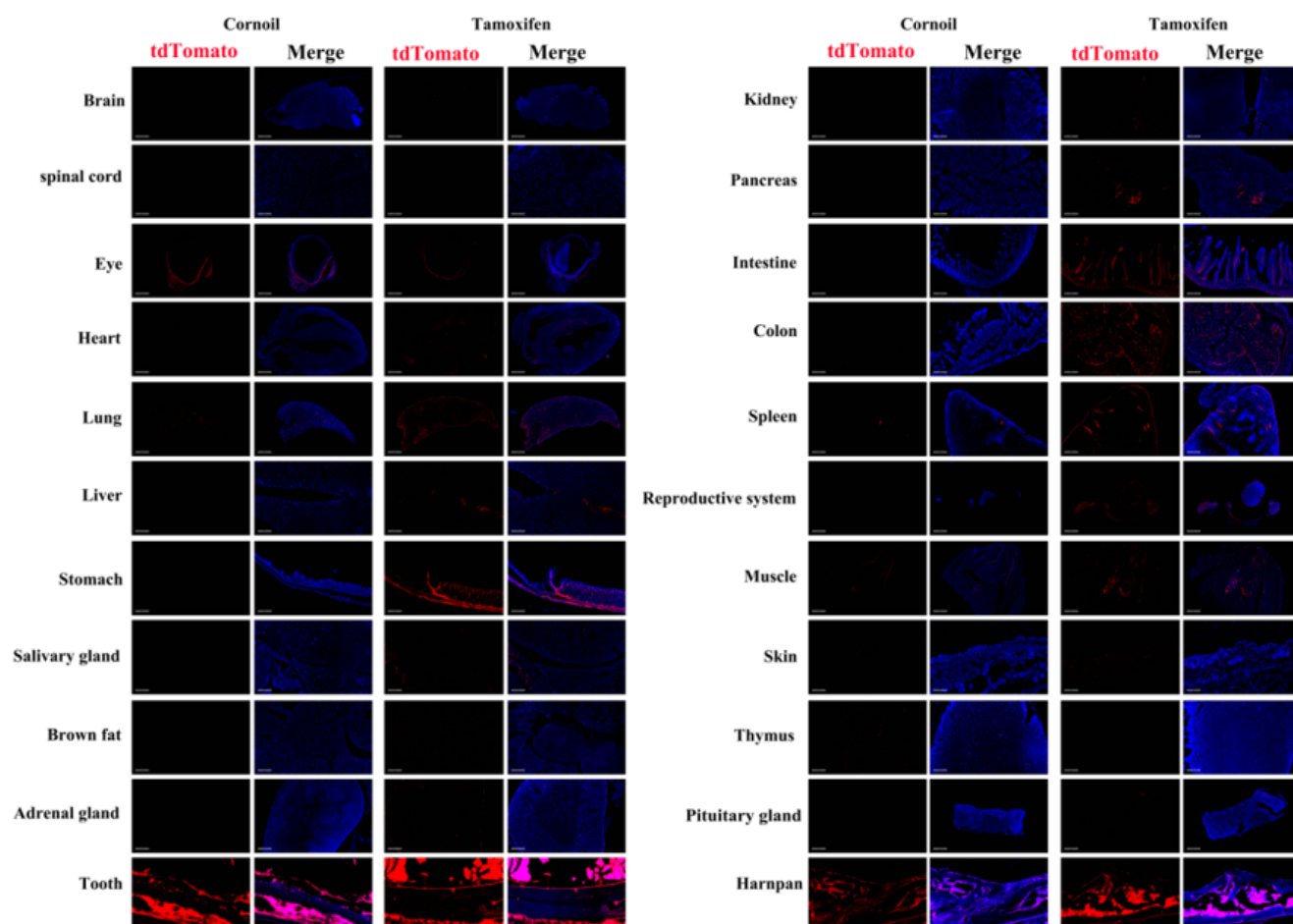


Fig2. Detection of tdTomato(red) in various tissues of Col1a1^{CreERT2/+};Rosa26^{tdTomato/+} mouse. Expression tissues include: lung, stomach, teeth, pancreas, small intestine, colon, spleen, epididymis, skin, pituitary gland and skull. A few cells expressed in brain, eyeball, heart, liver, salivary gland, adrenal gland, kidney, muscle, thymus. Tissues that unexpressed include spinal cord, brown fat. The control group is expressed before induction. (39-days old, male) (For more detailed information please contact our technical advisor.)
