

# Cpa3-2A-CreERT2

<b>Nomenclature</b>	C57BL/6Smoc- <i>Cpa3</i> <sup>em2(2A-CreERT2-WPRE-polyA)Smoc</sup>
<b>Cat. NO.</b>	NM-KI-200005
<b>Strain State</b>	Repository Live

## Gene Summary

<b>Gene Symbol</b> <b>Cpa3</b>	<b>Synonyms</b>	MC-CPA
	<b>NCBI ID</b>	<a href="#">12873</a>
	<b>MGI ID</b>	<a href="#">88479</a>
	<b>Ensembl ID</b>	<a href="#">ENSMUSG000000001865</a>
	<b>Human Ortholog</b>	CPA3

## Model Description

A 2A-CreERT2-WPRE-polyA expression cassette was knocked into the Cpa3 gene stop codon site.

**Research Application:** Cre recombinase tool

\*Literature published using this strain should indicate: Cpa3-2A-CreERT2 mice (Cat. NO. NM-KI-200005) were purchased from Shanghai Model Organisms Center, Inc..

## Validation Data

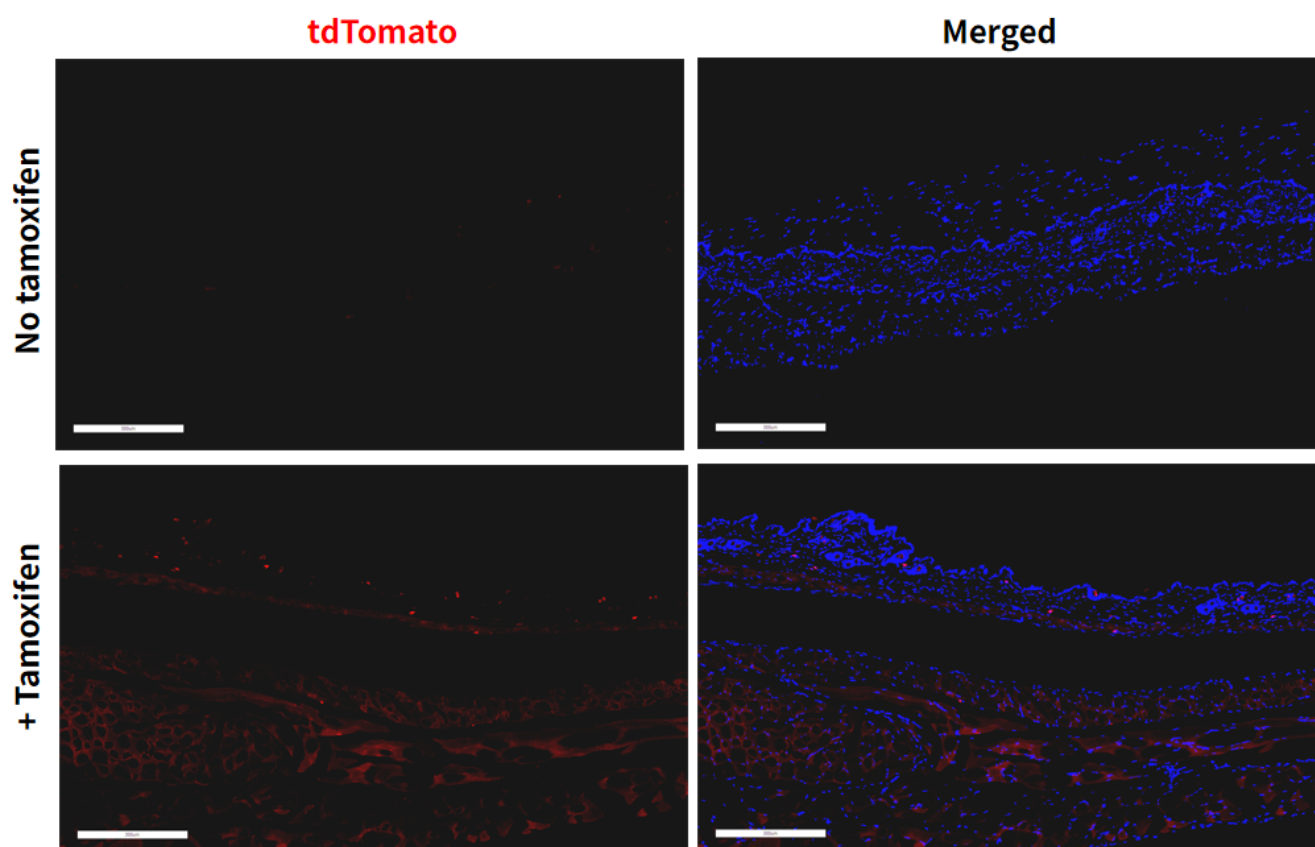


Fig1. Cre mediated recombination in skin of  $Cpa3^{CreERT2/+};Rosa26^{tdTomato/+}$  mouse.

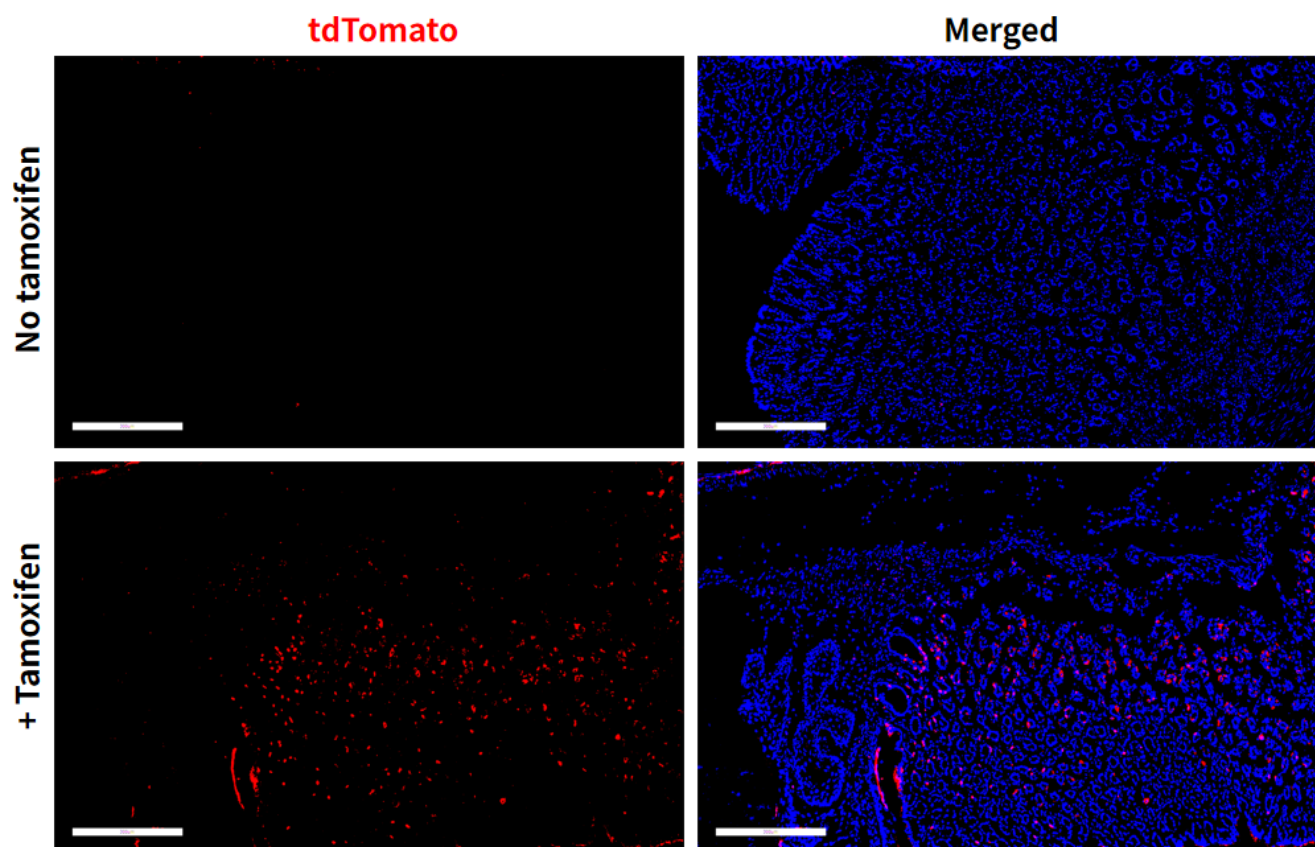


Fig2. Cre mediated recombination in stomach of  $Cpa3^{CreERT2/+};Rosa26^{tdTomato/+}$  mouse.

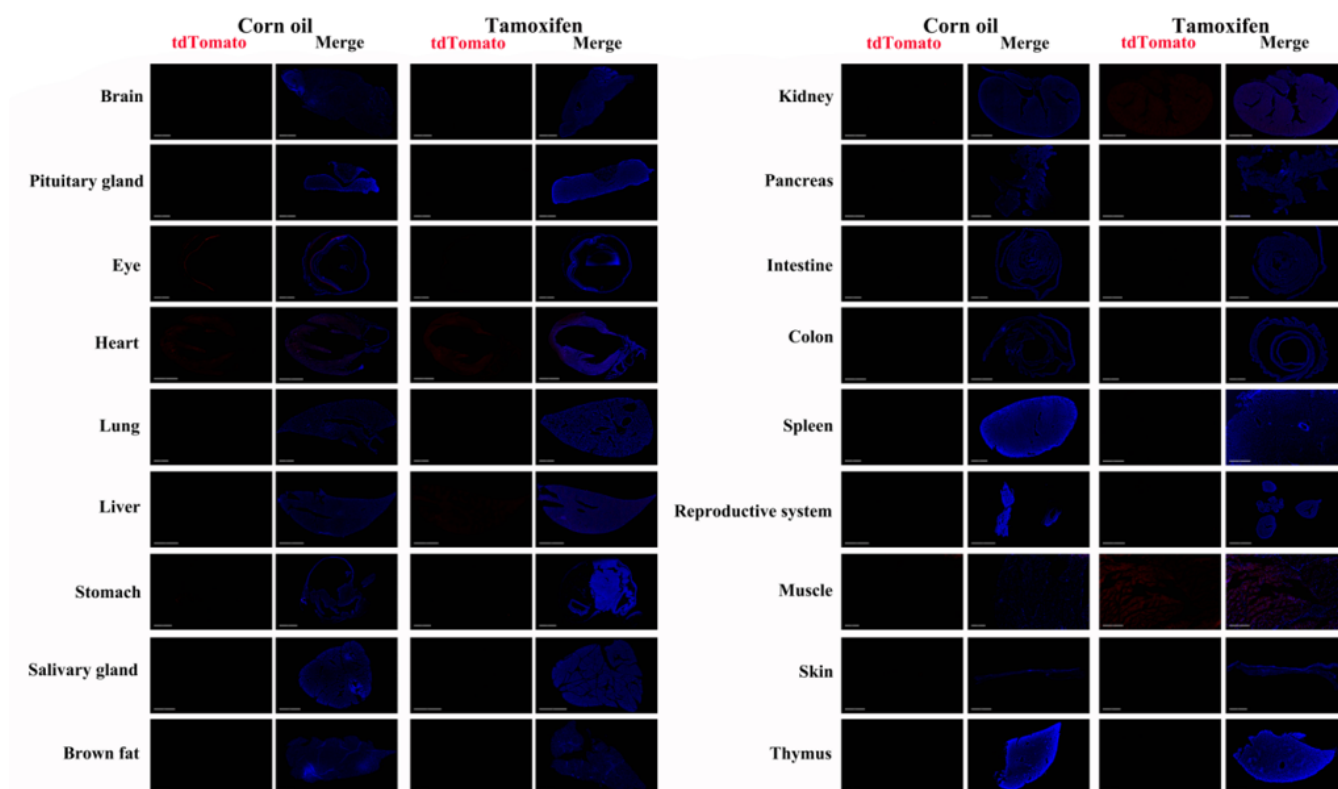


Fig3. Detection of tdTomato(red) in various tissues of Cpa3<sup>CreERT2/+</sup>;Rosa26<sup>tdTomato/+</sup> mouse. Expression tissues include: salivary gland, lung, ovaries and uterus. No obvious positive signals were observed in the brain, pituitary gland, retina, heart, lungs, liver, brown fat, muscles, kidneys, pancreas, small intestine, large intestine, spleen and thymus.(61-days old, female) (For more detailed information please contact our technical advisor.)