

Myf6-CreERT2

Nomenclature	C57BL/6Smoc- <i>Myf6</i> ^{em1(CreERT2-pA)Smoc}
Cat. NO.	NM-KI-200125
Strain State	Repository Live

Gene Summary

Gene Symbol Myf6	Synonyms	MRF4; bHLHc4; herculin
	NCBI ID	17878
	MGI ID	97253
	Ensembl ID	ENSMUSG00000035923
	Human Ortholog	MYF6

Model Description

A CreERT2-pA expression cassette was knocked into the Myf6 gene start codon site. Myf6 (myogenic factor 6) is a DNA-binding protein involved in muscle development. When crossed with a strain carrying a gene flanked by loxP sites, the flanked gene will be removed in cells expressing Myf6.

Research Application: Cre recombinase tool

*Literature published using this strain should indicate: Myf6-CreERT2 mice (Cat. NO. NM-KI-200125) were purchased from Shanghai Model Organisms Center, Inc..

Validation Data

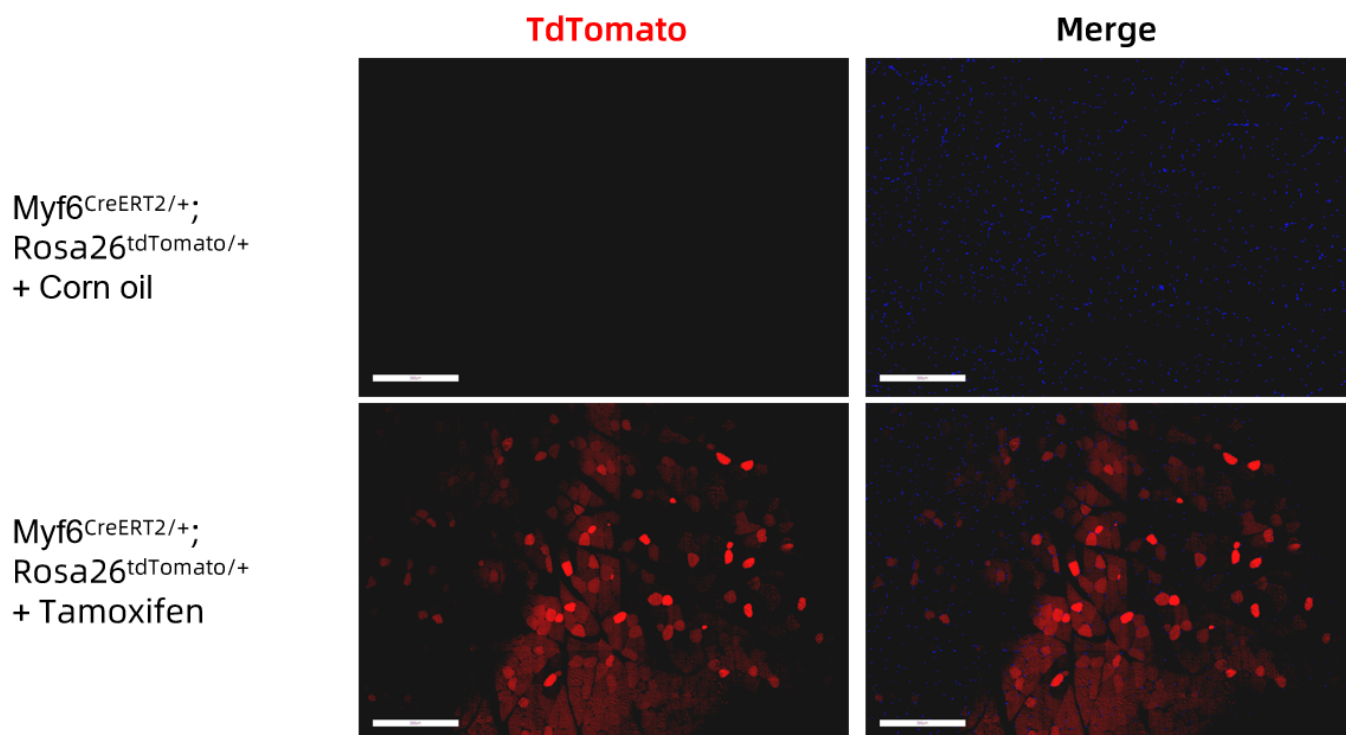


Fig. 1 CreERT2-mediated recombination in the muscle of Myf6^{CreERT2/+}; Rosa26^{tdTomato/+} mouse. TdTomato(red) expression can be detected in the muscle of Myf6^{CreERT2/+}; Rosa26^{tdTomato/+} mouse after tamoxifen treatment.

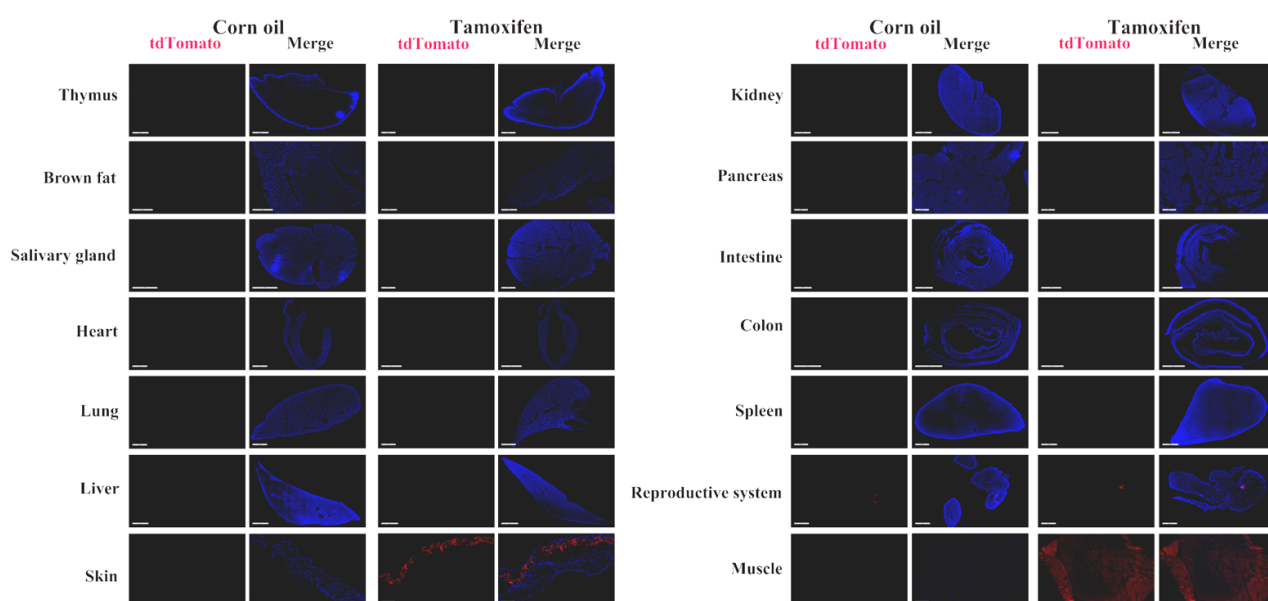


Fig. 2 Detection of tdTomato(red) in various tissues of Myf6^{CreERT2/+}; Rosa26^{tdTomato/+} mice. Tdtomato is expressed in the muscle and thymus after tamoxifen treatment. Tdtomato expression can not be observed in the brain, colon, epididymis, kidney, spleen, stomach, brown fat, intestine, heart, retina, liver, lung, pancreas, testis and salivary gland. (For more detailed information please contact our technical advisor.)

