

# Pgr-IRES-Cre

<b>Nomenclature</b>	C57BL/6Smoc- <i>Pgr</i> <sup>em1(IRES-Cre)Smoc</sup>
<b>Cat. NO.</b>	NM-KI-200150
<b>Strain State</b>	Repository Live

## Gene Summary

<b>Gene Symbol</b> <b>Pgr</b>	<b>Synonyms</b>	PR; PR-A; PR-B; NR3C3; BB114106; 9930019P03Rik
	<b>NCBI ID</b>	<a href="#">18667</a>
	<b>MGI ID</b>	<a href="#">97567</a>
	<b>Ensembl ID</b>	<a href="#">ENSMUSG00000031870</a>
	<b>Human Ortholog</b>	PGR

## Model Description

A IRES-Cre expression cassette was knocked into the Pgr gene stop codon site.

**Research Application:** Cre recombinase tool

\*Literature published using this strain should indicate: Pgr-IRES-Cre mice (Cat. NO. NM-KI-200150) were purchased from Shanghai Model Organisms Center, Inc..

## Validation Data

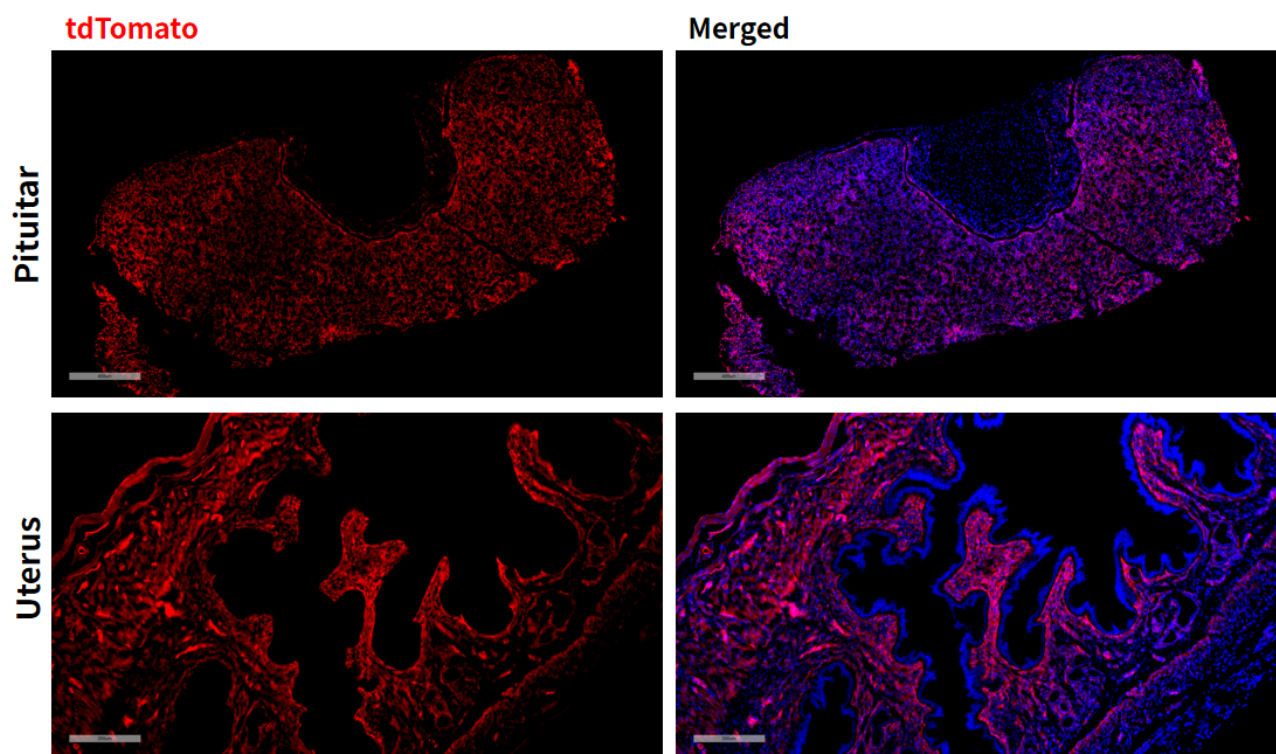


Fig 1. Cre-mediated recombination in pituitary and uterus of *PgrCre/+; Rosa26tdTomato/+* mice.

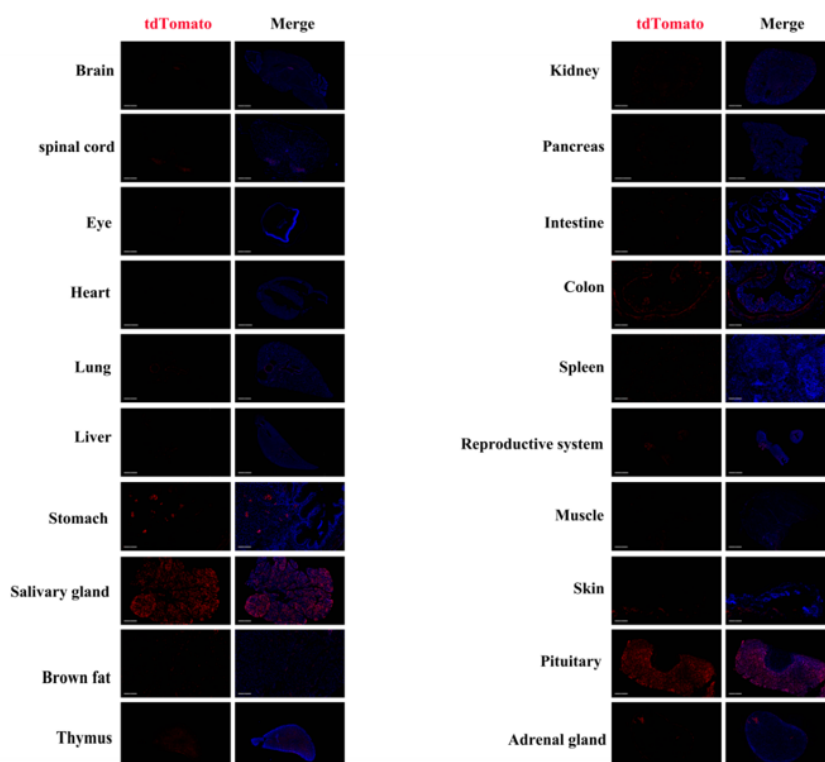


Fig 2. Detection of tdTomato (red) in various tissues of *PgrCre/+; Rosa26tdTomato/+* mice. Expression tissues include: hippocampus, spinal cord, retina, lung, liver, stomach, salivary gland, brown fat, thymus, kidney, pancreas, small intestine, colon, spleen, ovary, uterus, fallopian tube, pituitary gland, adrenal gland. A few cells expressed in heart, muscle, skin. (13.5-week old, female) (For more detailed information please contact our technical advisor.)

