

Foxg1-Cre

Nomenclature	C57BL/6Smoc- <i>Foxg1</i> ^{em1(Cre-WPRE-polyA)Smoc}
Cat. NO.	NM-KI-200156
Strain State	Sperm cryopreservation

Gene Summary

Gene Symbol	Synonyms	Bf1, BF-1, Hfh9, Hfhbf1, 2900064B05Rik
	NCBI ID	15228
	MGI ID	1347464
	Ensembl ID	ENSMUSG00000020950
	Human Ortholog	FOXG1

Model Description

A Cre-WPRE-polyA expression cassette was knocked into the Foxg1 gene start codon site.

Research Application: Cre recombinase tool

*Literature published using this strain should indicate: Foxg1-Cre mice (Cat. NO. NM-KI-200156) were purchased from Shanghai Model Organisms Center, Inc..

Validation Data

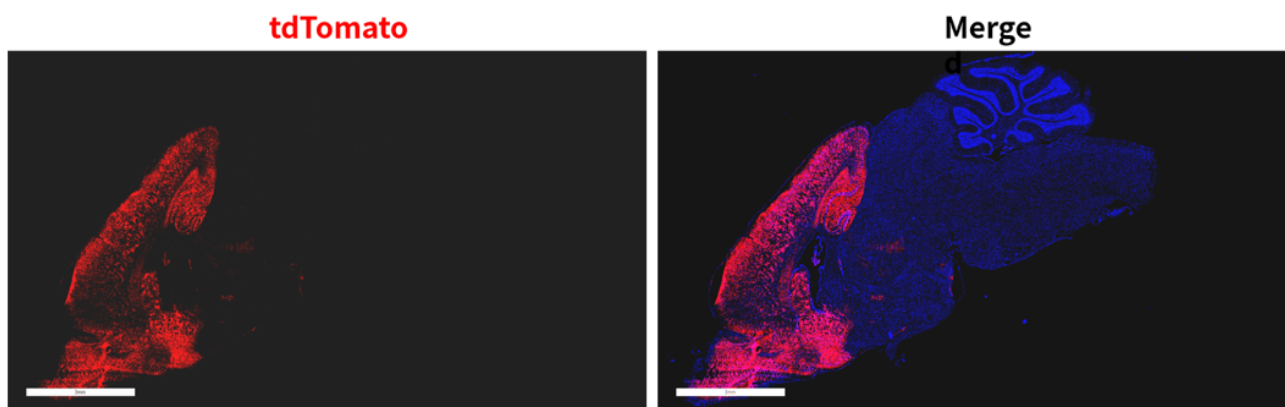


Fig 1. Cre-mediated recombination in brain of $Foxg1^{Cre/+}$; $Rosa26^{tdTomato/+}$ mice.

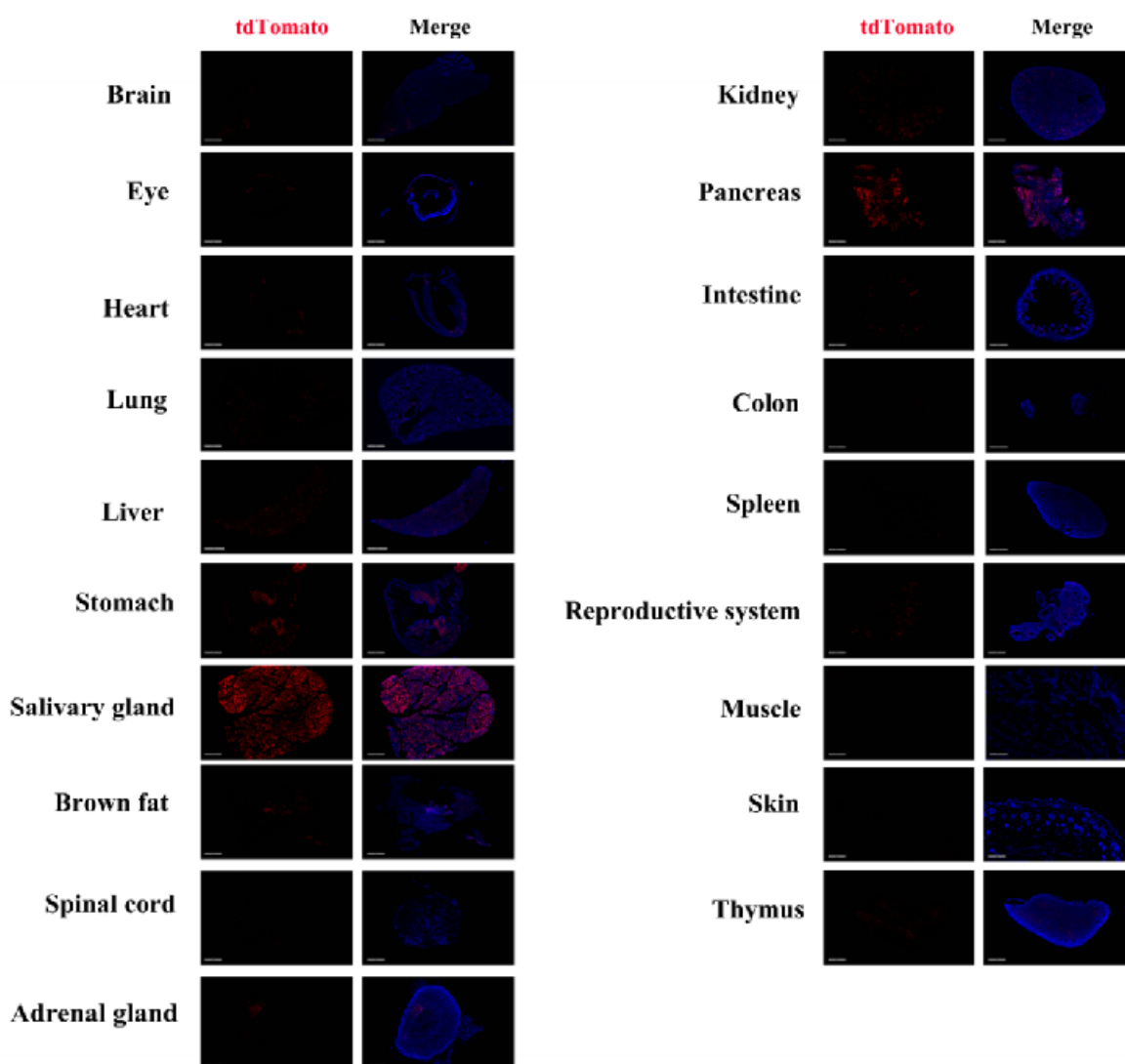


Fig 2. Detection of tdTomato (red) in various tissues of $Foxg1^{Cre/+}$; $Rosa26^{tdTomato/+}$ mice.

Expression tissues include: brain, retina, heart, lung, liver, stomach, salivary glands, brown fat, kidney, pancreas, small intestine, large intestine, ovary, thymus, adrenal gland. A few cells expressed in spinal cord, spleen, muscle, skin. (9-week old, female) (For more detailed information please contact our technical advisor.)