

Cx3cr1-CreERT2

Nomenclature	C57BL/6Smoc- <i>Cx3cr1</i> ^{em1(creERT2-WPRE-polyA)Smoc}
Cat. NO.	NM-KI-200157
Strain State	Repository Live

Gene Summary

Gene Symbol Cx3cr1	Synonyms	-
	NCBI ID	13051
	MGI ID	1333815
	Ensembl ID	ENSMUSG00000052336
	Human Ortholog	CX3CR1

Model Description

A creERT2-WPRE-polyA expression cassette was knocked into the Cx3cr1 gene start codon site.

Research Application: Cre recombinase tool

*Literature published using this strain should indicate: Cx3cr1-CreERT2 mice (Cat. NO. NM-KI-200157) were purchased from Shanghai Model Organisms Center, Inc..

Validation Data

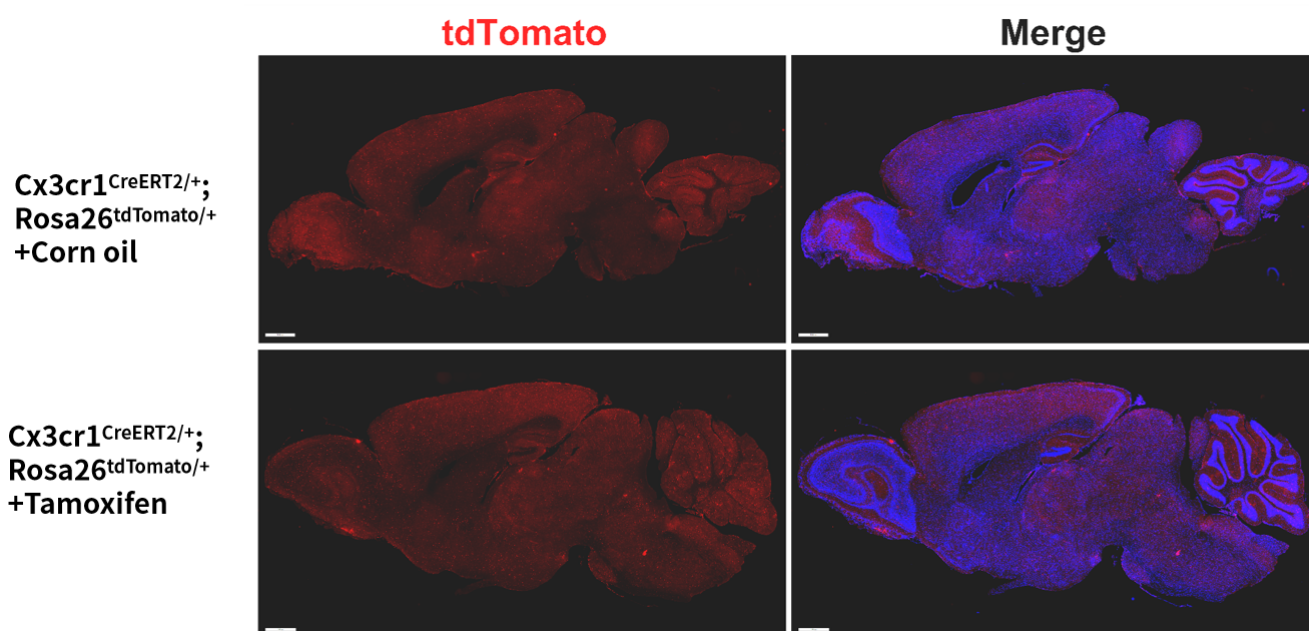


Fig. 1 CreERT2-mediated recombination in the brain of Cx3cr1^{CreERT2/+}; Rosa26^{tdTomato/+} mouse.

Detection of tdTomato (red) in the brain of Cx3cr1^{CreERT2/+}; Rosa26^{tdTomato/+} mouse after tamoxifen treatment. There is a significant leakage of cre expression in the brain in the absence of tamoxifen.