

# MC38-hPD-L1

## Strain Information

Cat. NO.	NM-S13-TM01
Cell Line	MC38- <i>Cd274</i> <sup>em1(hPDL1)/Smoc</sup>
Strain State	Validation of pharmacodynamic assays completed
Model Description	The endogenous mouse <i>Cd274</i> (also known as PD-L1) gene was replaced by human PDL1 gene.
	*Literature published using this strain should indicate: MC38-hPD-L1 cell line (Cat. NO. NM-S13-TM01) was purchased from Shanghai Model Organisms Center, Inc..

## Validation Data

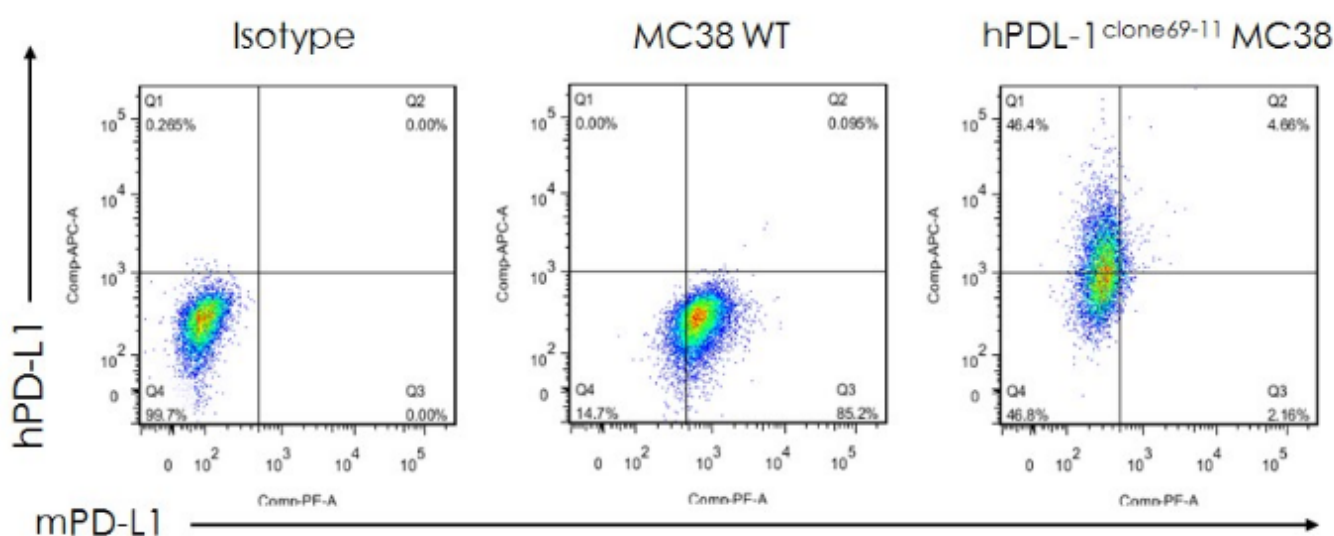


Figure 1. hPDL1 expression in wild-type MC38 and MC38-hPDL1 cell lines.

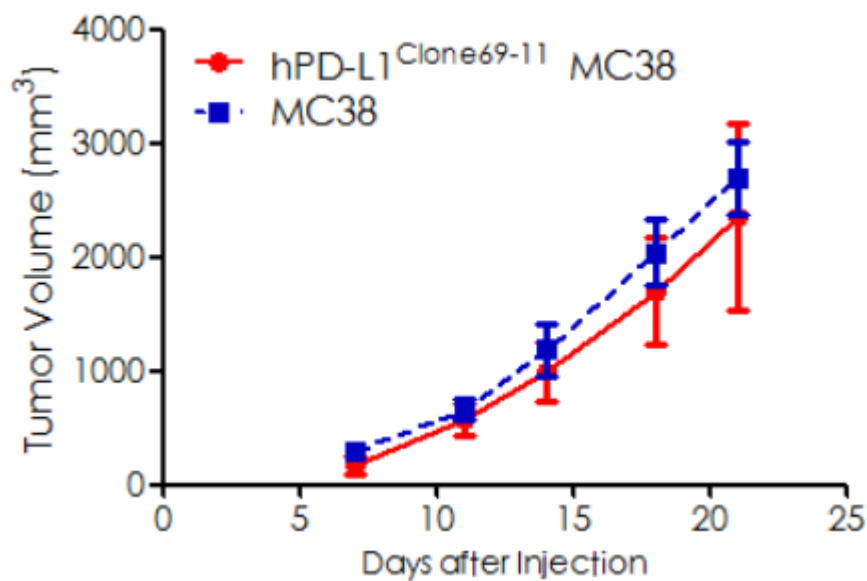


Figure 2. Tumor growth curve of MC38-hPDL1 syngeneic model (n=3).

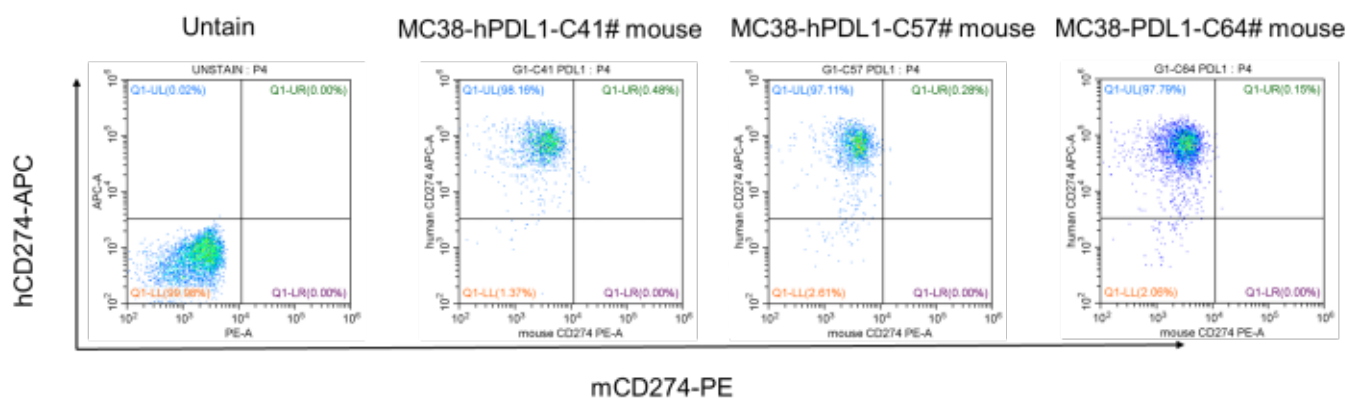


Figure 3. The expression of hPDL1 in humanized modified tumors by FACS.

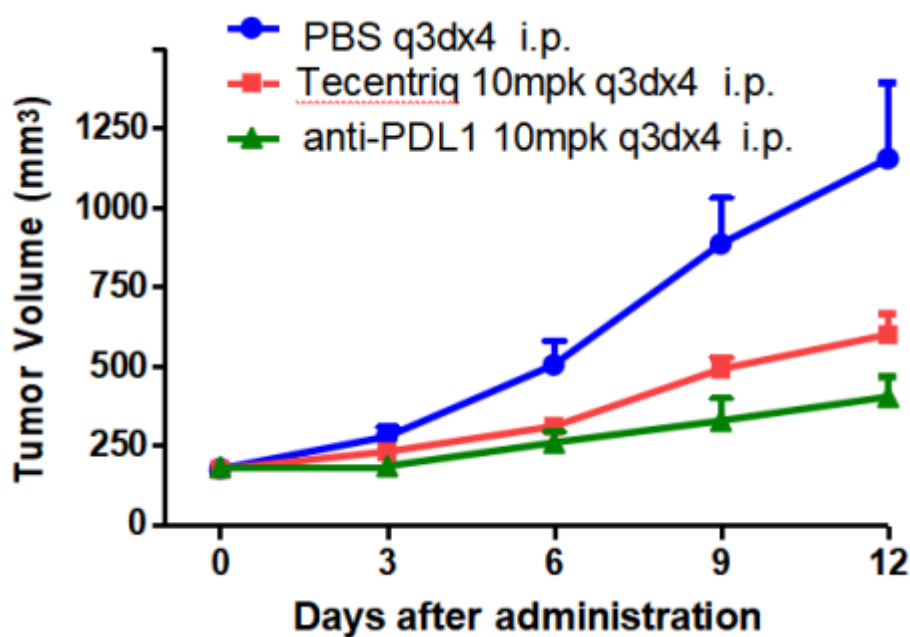


Figure 4. Antitumor activity of Tencentriq and another anti-PDL1 antibody (n=8).

---