

# Ly6g-2A-CreERT2

<b>Nomenclature</b>	C57BL/6Smoc- <i>Ly6g</i> <sup>em3(2A-CreERT2)Smoc</sup>
<b>Cat. NO.</b>	NM-KI-200218
<b>Strain State</b>	Repository Live

## Gene Summary

<b>Gene Symbol</b> <b>Ly6g</b>	<b>Synonyms</b>	Gr1; Gr-1; Ly-6G
	<b>NCBI ID</b>	<a href="#">546644</a>
	<b>MGI ID</b>	<a href="#">109440</a>
	<b>Ensembl ID</b>	<a href="#">ENSMUSG00000022582</a>
	<b>Human Ortholog</b>	LY6G

## Model Description

A 2A-CreERT2 expression cassette was knocked into the Ly6g gene start codon site.

**Research Application:** Cre tool mice

\*Literature published using this strain should indicate: Ly6g-2A-CreERT2 mice (Cat. NO. NM-KI-200218) were purchased from Shanghai Model Organisms Center, Inc..

## Validation Data

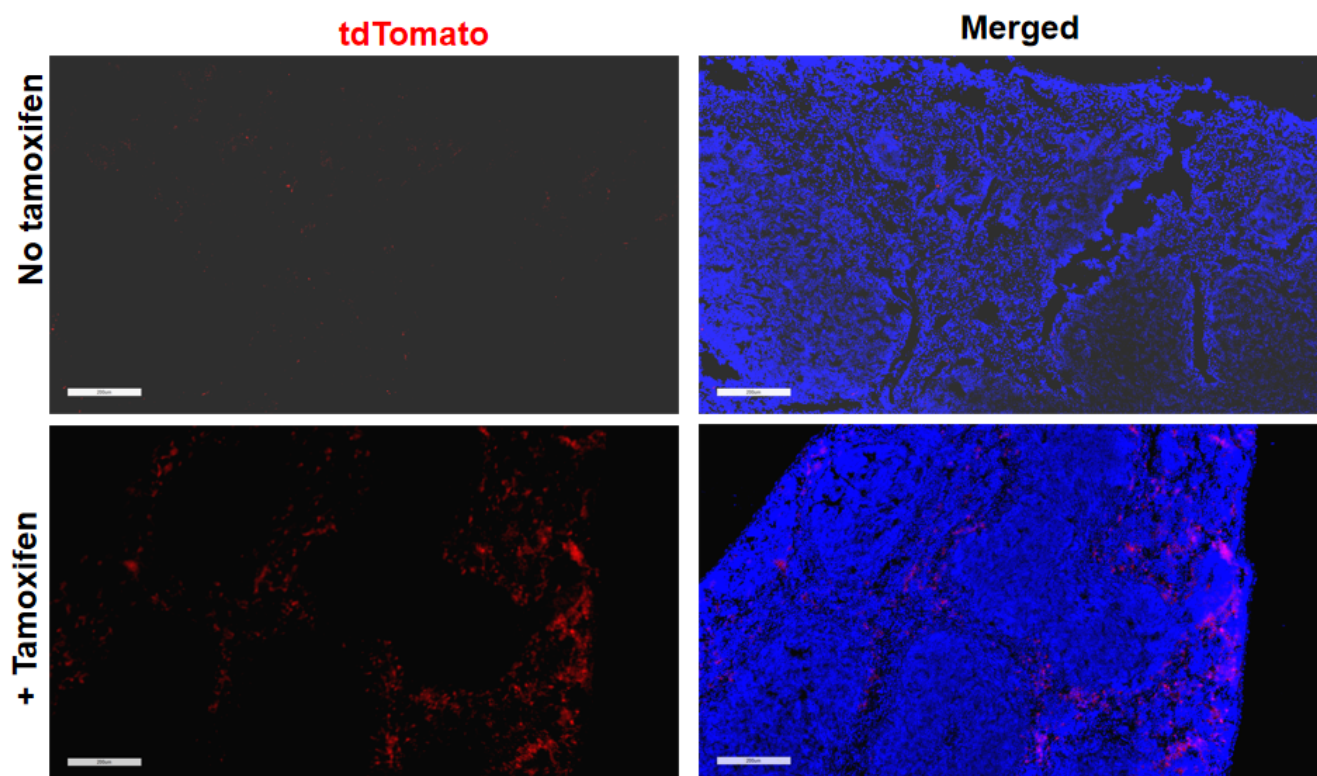


Fig1. Cre mediated recombination in spleen of Ly6gCreERT2/+;Rosa26tdTomato/+ mouse.

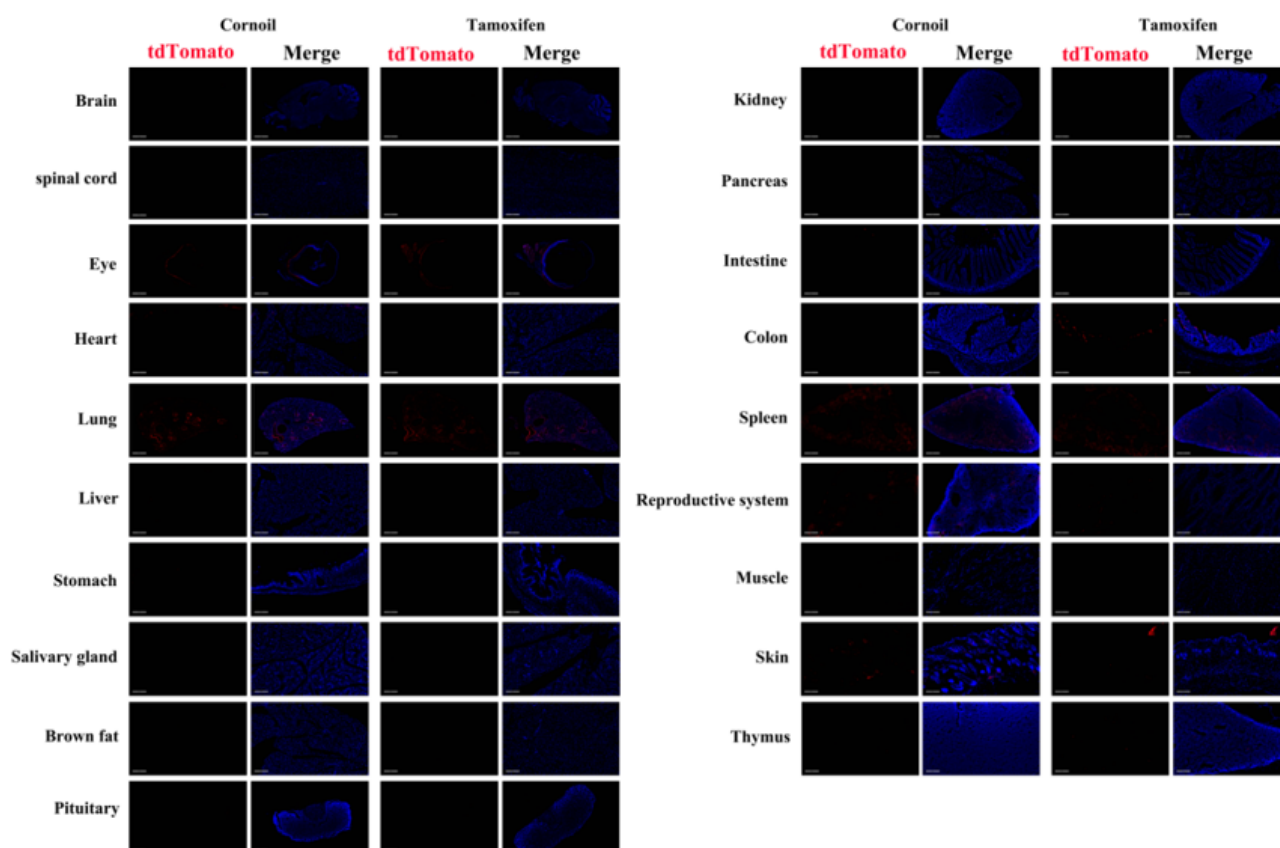


Fig2. Detection of tdTomato(red) in various tissues of Ly6gCreERT2/+;Rosa26tdTomato/+ mouse. Expression tissues include: spleen, colon, lung. A few cells expressed in testis, thymus. Tissues that unexpressed include brain, spinal cord, retina, heart,

liver, stomach, salivary glands, brown fat, pituitary gland, kidney, pancreas, small intestine, muscle and epidermis. (8-weeks old, male) (For more detailed information please contact our technical advisor.)

---