

Isl1-CreERT2

Nomenclature	C57BL/6Smoc- <i>Isl1</i> ^{em1(CreERT2)} Smoc
Cat. NO.	NM-KI-00013
Strain State	Embryo cryopreservation

Gene Summary

Gene Symbol Isl1	Synonyms	-
	NCBI ID	16392
	MGI ID	101791
	Ensembl ID	ENSMUSG000000042258
	Human Ortholog	ISL1

Model Description

CreERT2 was inserted at the start codon (ATG site). The KI mice have a tamoxifen-inducible cre-mediated recombination system.

Research Application: Cre recombinase tool

*Literature published using this strain should indicate: Isl1-CreERT2 mice (Cat. NO. NM-KI-00013) were purchased from Shanghai Model Organisms Center, Inc..

Validation Data

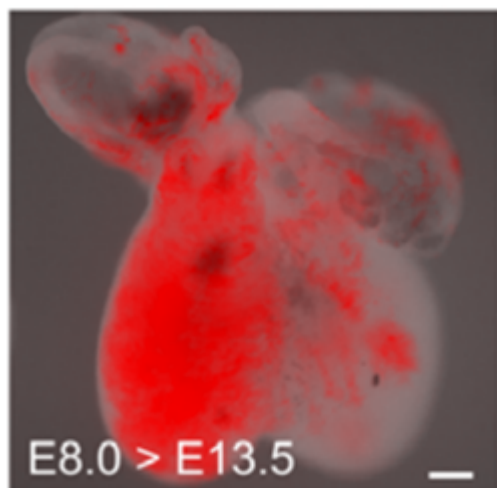
Isl1-CreER;R26-tdTomato**tdTomato**

Fig. 1 CreERT2-mediated recombination in the heart of $Isl1^{CreERT2/+}; R26^{tdtomato/+}$ mouse embryo at E13.5. The $Isl1^{+}$ cell lineage (tdTomato) mainly contributes to the right ventricle at E13.5 of $Isl1^{CreERT2/+}; R26^{tdtomato/+}$. Tamoxifen was induced at E8.0. (Documented in the following reference.)

Publications

[Genetic Lineage Tracing of Nonmyocyte Population by Dual Recombinases](#)

References: Circulation