

4T1-Luc

Strain Information

Cat. NO.	NM-S07-1
Cell Line	4T1-Tg(luc)/Smoc
Strain State	Validation of tumorigenic capacity completed
Model	Luciferase-labeled mouse 4T1 cell.
Description	*Literature published using this strain should indicate: 4T1-Luc cell line (Cat. NO. NM-S07-1) was purchased from Shanghai Model Organisms Center, Inc..

Validation Data

1. Transfer to liver and whole body

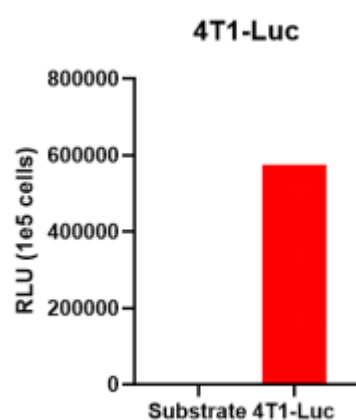


Figure 1. Luciferase activity assay of 4T1-Luc cell line

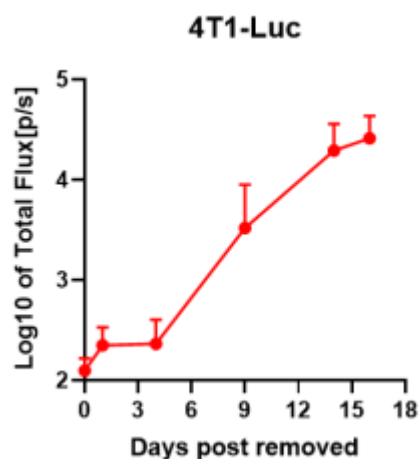


Figure 2. Signal increase curve of 4T1-Luc transfer allogeneic model (n=5)

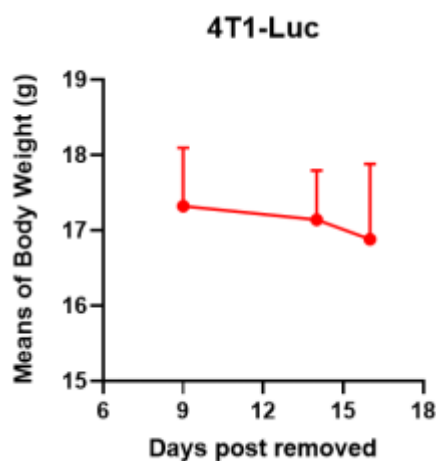


Figure 3. Body weight change of 4T1-Luc transfer allogeneic model (n=5)

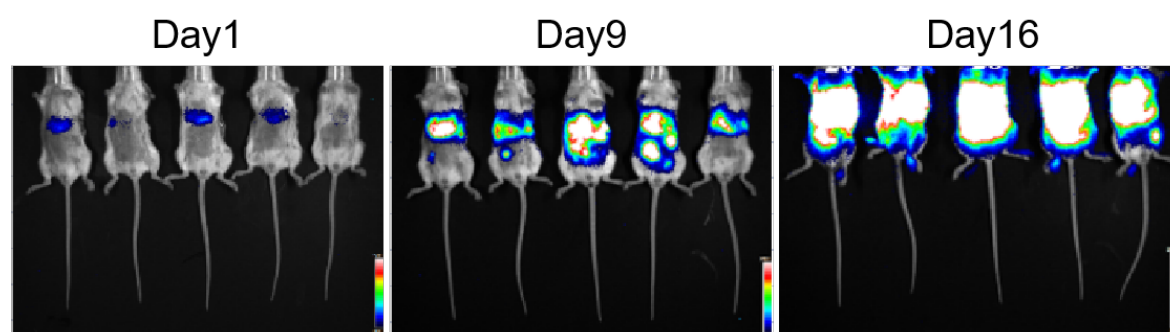


Figure 4. Bioluminescence imaging of 4T1-Luc transfer allogeneic mouse model

2. Transfer to lung from s.c.

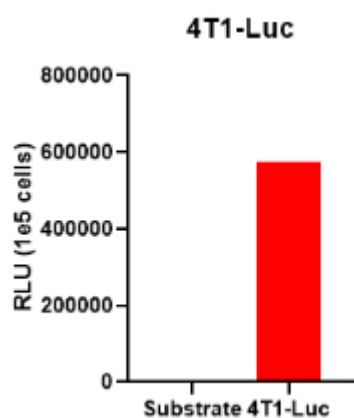


Figure 5. Luciferase activity assay of 4T1-Luc cell line

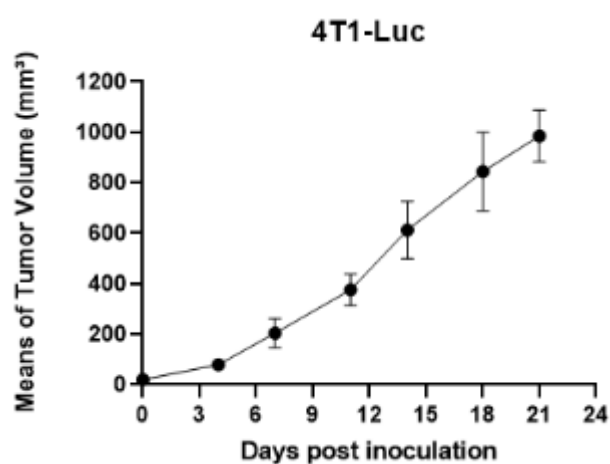


Figure 6. Tumor growth curve of 4T1-Luc allogeneic model (n=6)

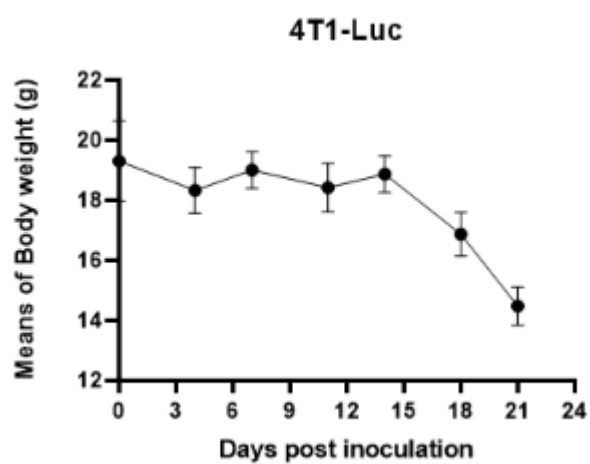


Figure 7. Body weight change of 4T1-Luc allogeneic model (n=6)

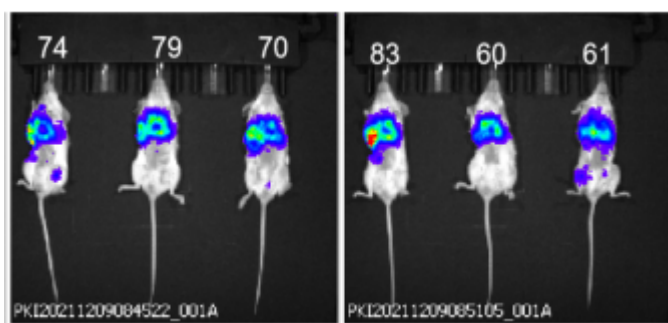


Figure 8. Bioluminescence imaging of 4T1-Luc allogeneic mouse model on day21