

Ccr2-IRES-DTRGFP

Nomenclature	C57BL/6Smoc- <i>Ccr2</i> ^{em1(IRES-DTRGFP)Smoc}
Cat. NO.	NM-KI-210102
Strain State	Repository Live

Gene Summary

Gene Symbol Ccr2	Synonyms	Ckr2; Ccr2a; Ccr2b; Ckr2a; Ckr2b; mJe-r; Cmkbr2; Cc-ckr-2
	Chromosome	9
	NCBI ID	12772
	MGI ID	106185
	Ensembl ID	ENSMUSG00000049103
	Human Ortholog	CCR2

Model Description

IRES-DTRGFP expression cassette was knocked into the Ccr2 gene .

*Literature published using this strain should indicate: Ccr2-IRES-DTRGFP mice (Cat. NO. NM-KI-210102) were purchased from Shanghai Model Organisms Center, Inc..

Validation Data

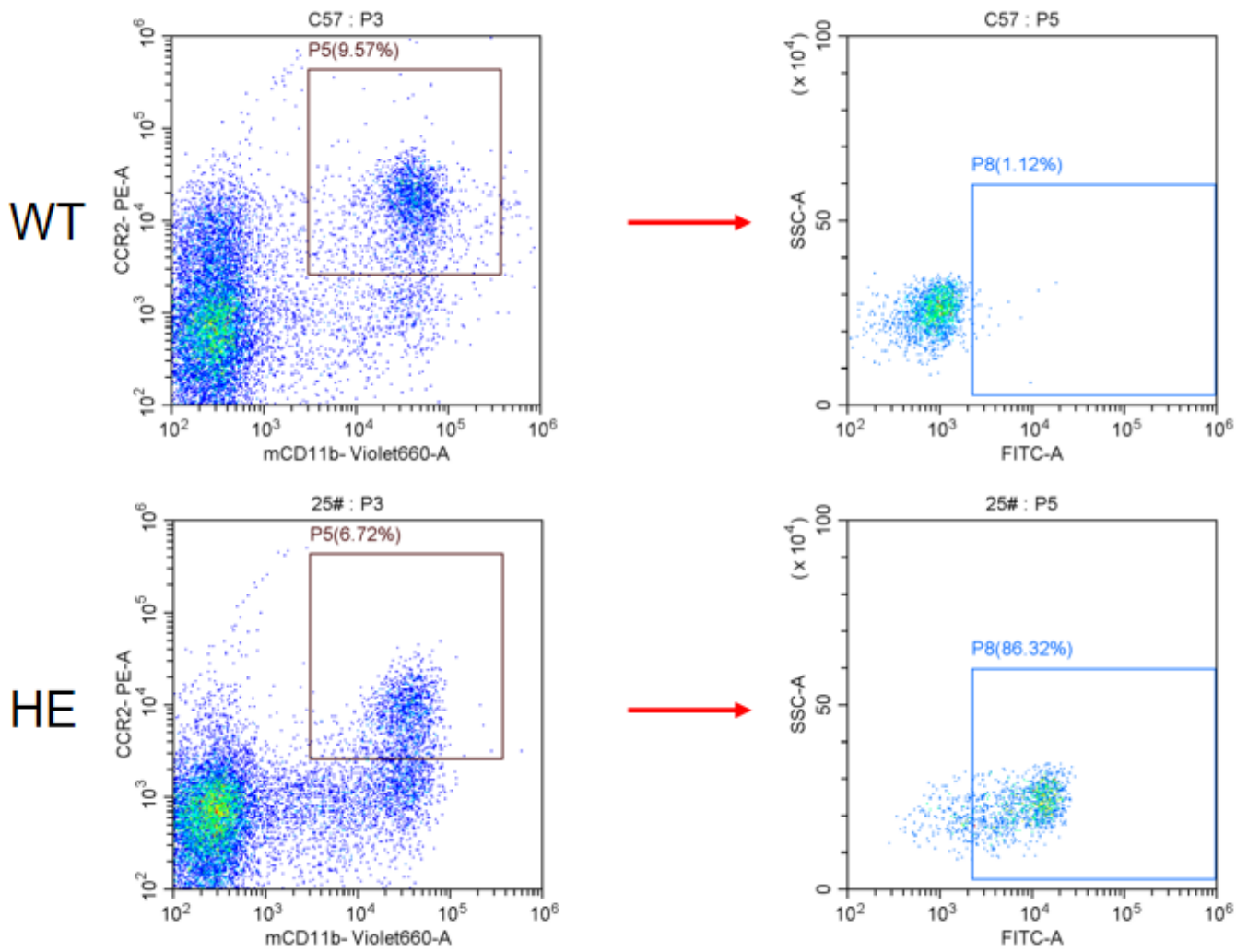


Fig1. Analysis of GFP expression in the Ccr2-IRES-DTRGFP mice by FACS. The expression of GFP could be detected in CCR2+ and CD11b+ cells in peripheral blood of the heterozygous KI mice.

Schematic diagram of DT dosing and FACS analysis time points:

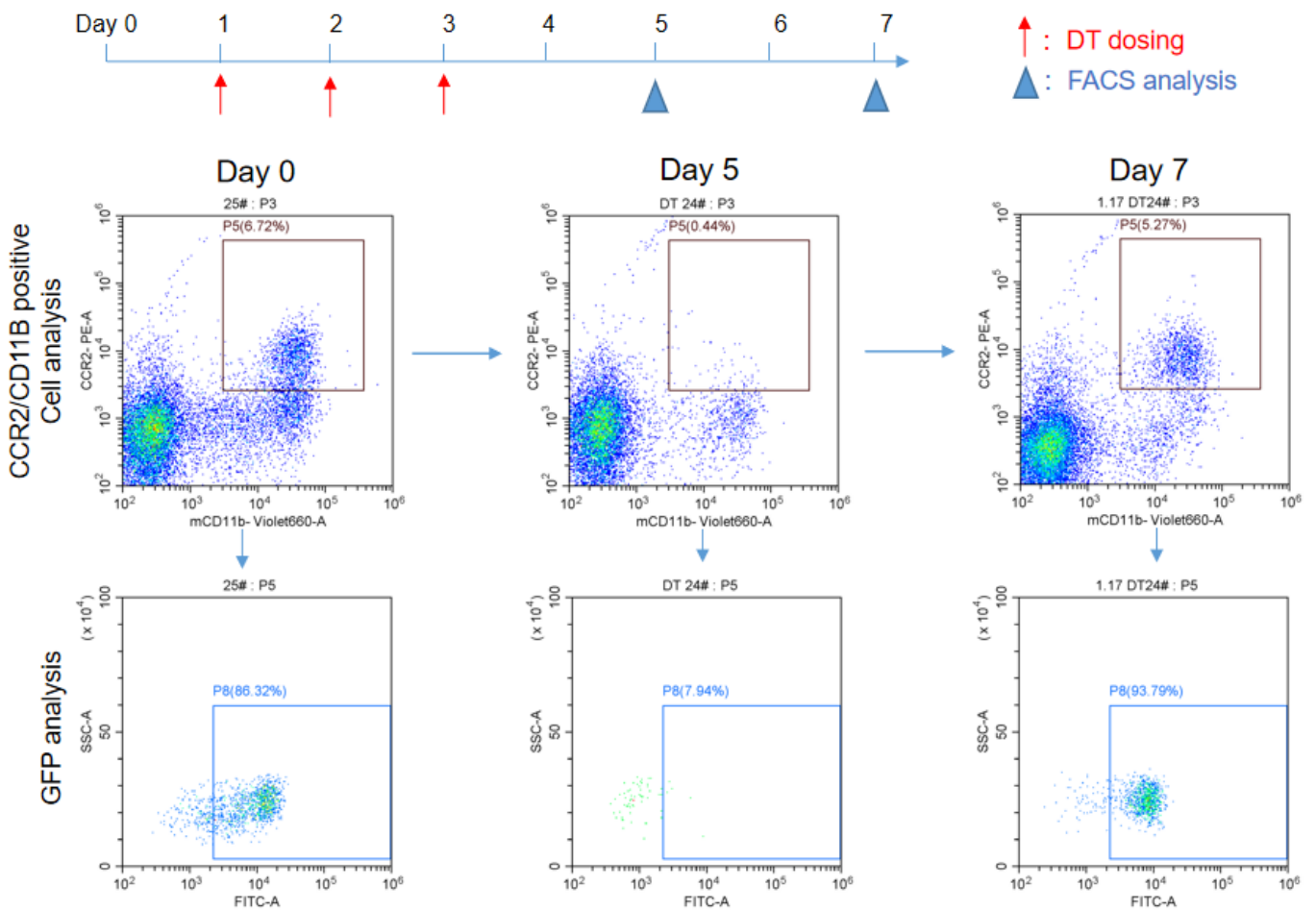


Fig2. Analysis of CCR2+/CD11b+ cells proportion and GFP level in Ccr2-IRES-DTRGFP mice by FACS. The heterozygous KI mice were treated with DT (qd x 3 days). After 2 days of drug withdrawal, the proportion of CCR2+ and CD11b+ cells in the peripheral blood were decreased, and the level of GFP positive cells also decreased. After 4 days of drug withdrawal, the proportion of CCR2+ and CD11b+ cells returned to normal, and the level of GFP positive cells also returned to normal.