

B2m-KO(NMG)

This B2m knockout mouse model was obtained by knocking out the exon 2-3 region of mouse B2m gene on the background of NMG mouse.

Nomenclature	NOD.Cg- <i>Prkdc</i> ^{scid} <i>Il2rg</i> ^{em1Smoc} <i>B2m</i> ^{em1Smoc}
Cat. NO.	NM-NSG-002
Strain State	Repository Live

Gene Summary

Gene Symbol B2M	Synonyms	y-m11; beta2m; beta2-m
	NCBI ID	12010
	MGI ID	88127
	Ensembl ID	ENSMUSG00000060802
	Human Ortholog	B2M

Model Description

This B2m knockout mouse model was obtained by knocking out the exon 2-3 region of mouse B2m gene on the background of NMG mouse.

Research Application: immunodeficiency, immune system, transplantation research

*Literature published using this strain should indicate: B2m-KO(NMG) mice (Cat. NO. NM-NSG-002) were purchased from Shanghai Model Organisms Center, Inc..

Validation Data

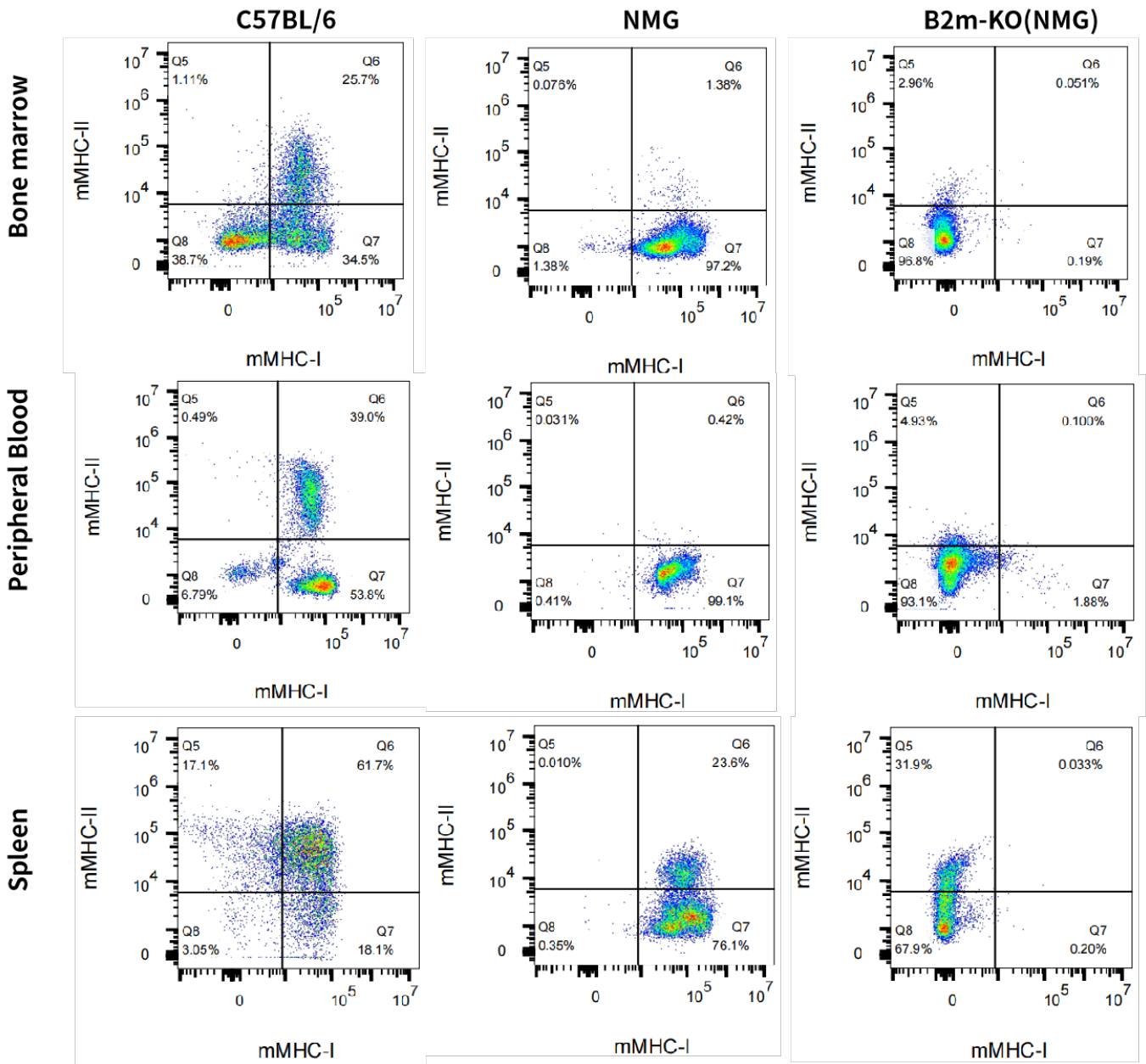


Fig 1. Expression characterization of mouse MHC I and MHC II in bone marrow, blood, spleen in B2m-KO(NMG) mice.

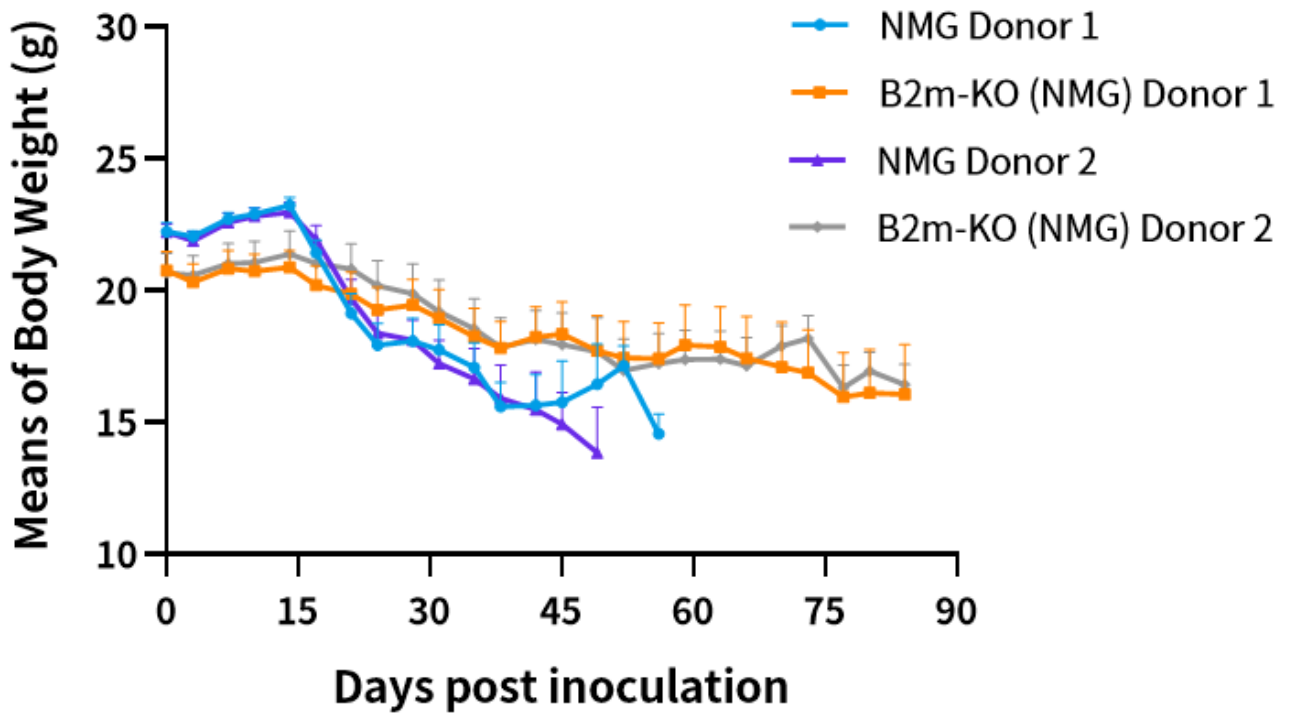


Fig 2. Body weight growth curve of huPBMC-B2m-KO(NMG) mice.

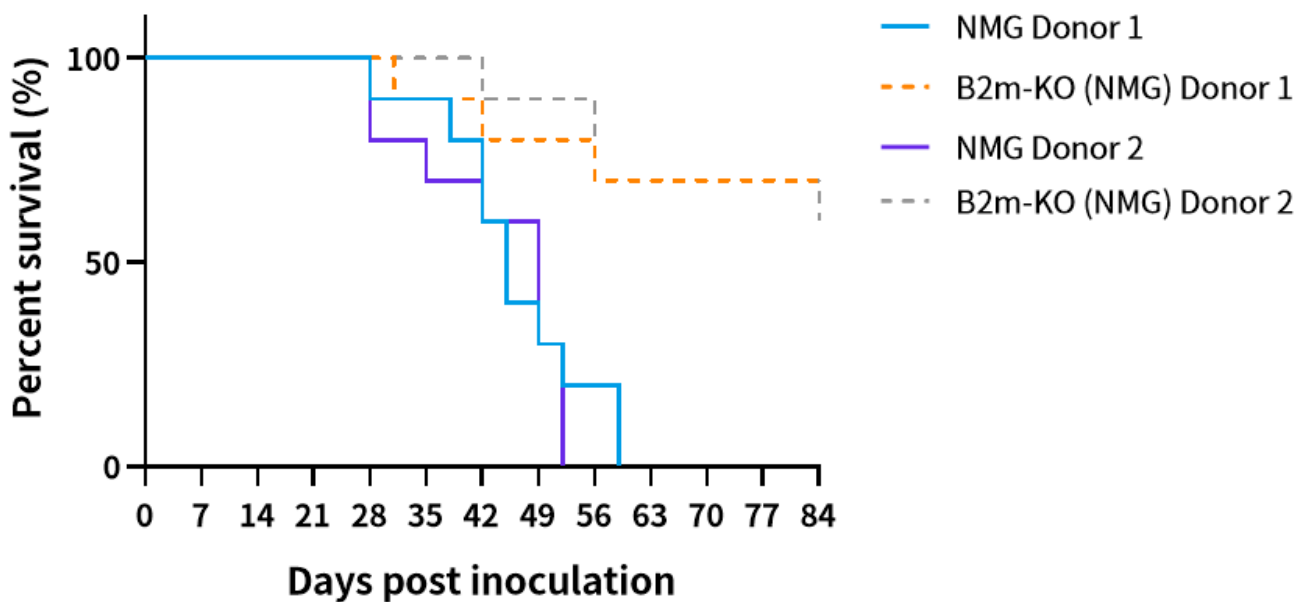


Fig 3. Survival rate of huPBMC-B2m-KO(NMG) mice.

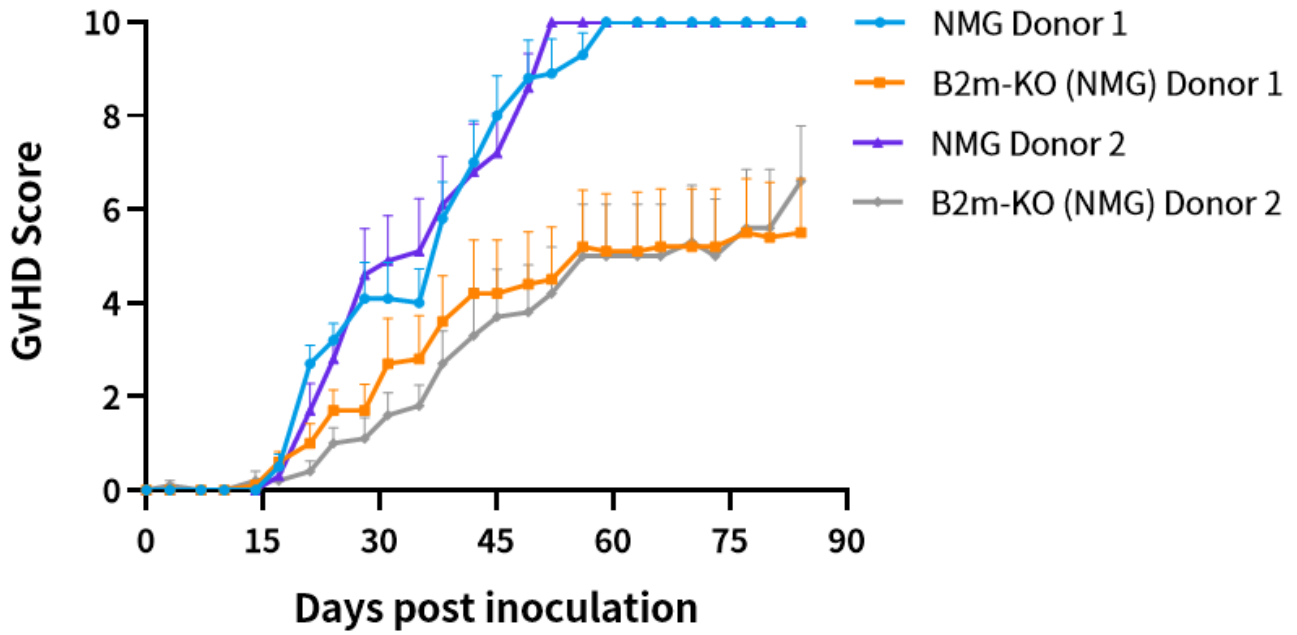


Fig 4. GvHD scores of huPBMC-B2m-KO(NMG) mice.

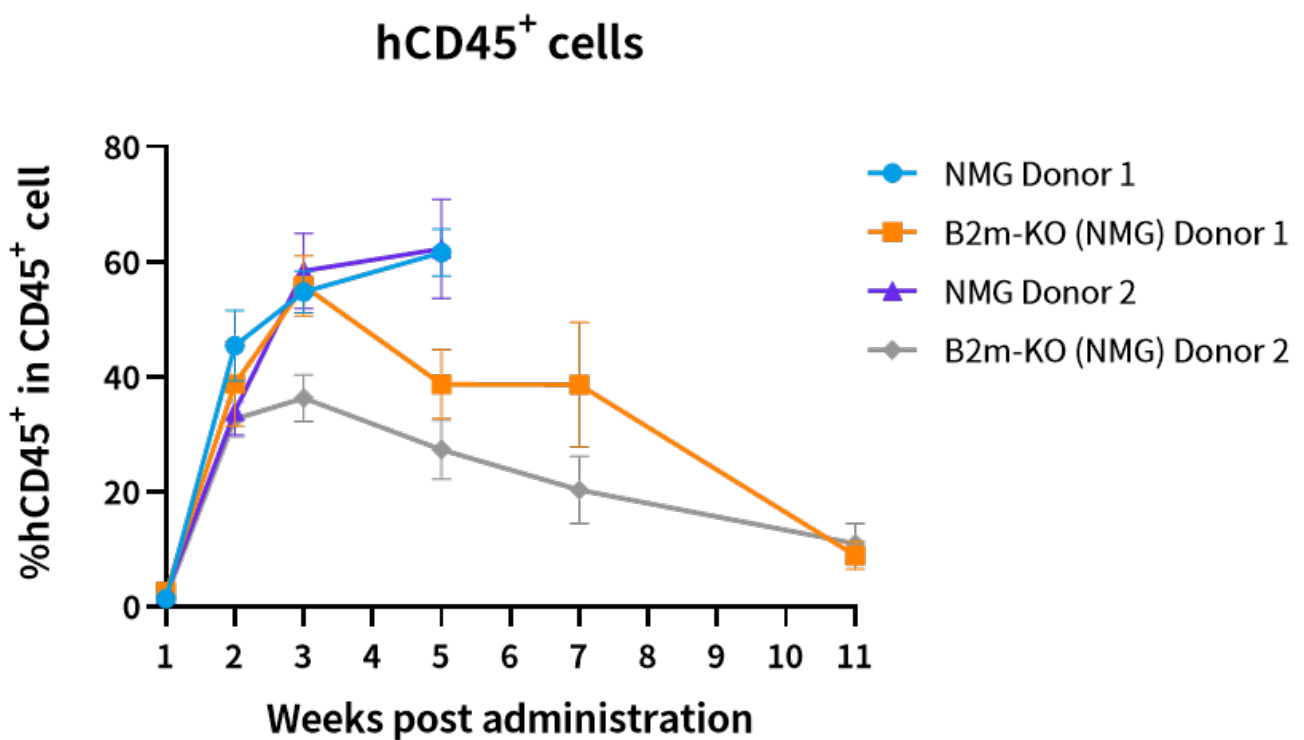


Fig 5. Percentage of hCD45-positive cells of huPBMC-B2m-KO(NMG) mice.

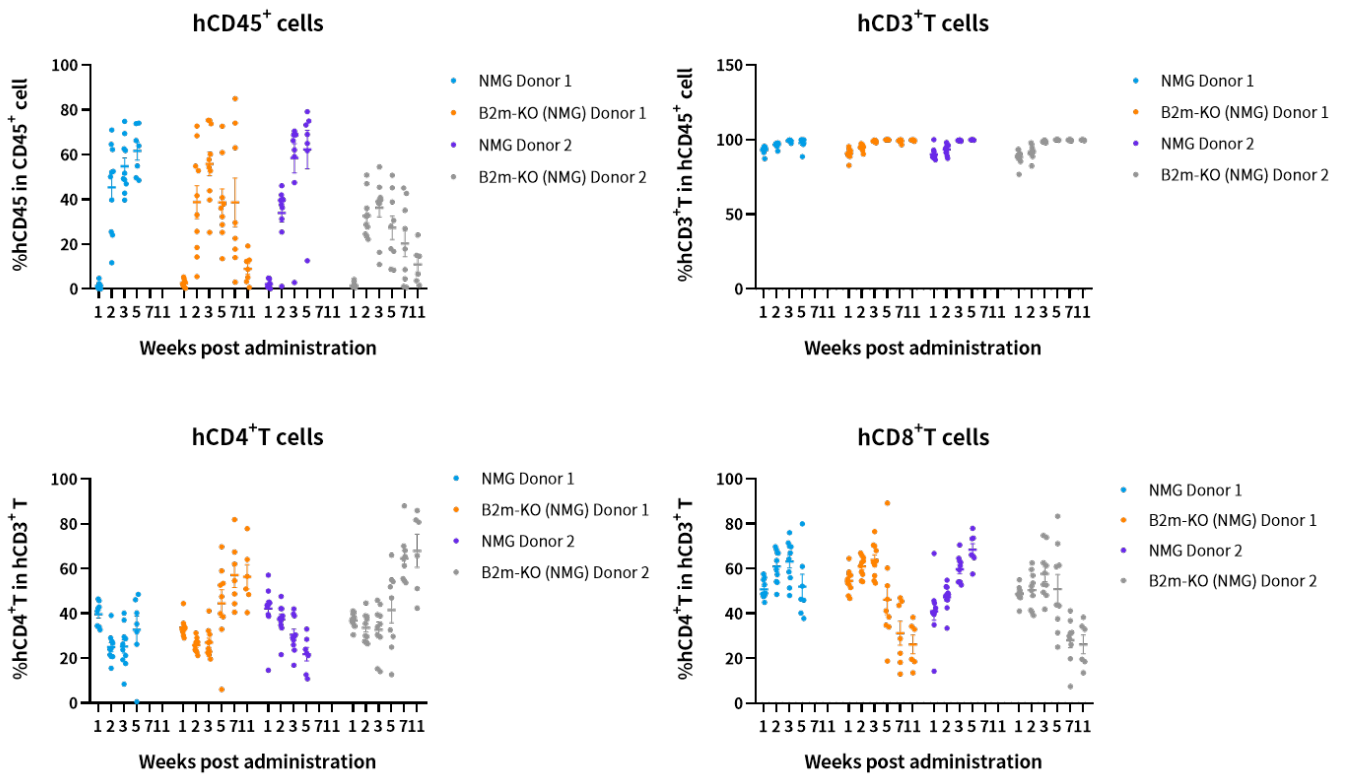


Fig 6. Flow analysis of peripheral blood lymphocyte subpopulations in the huPBMc-B2m-KO(NMG) mice.